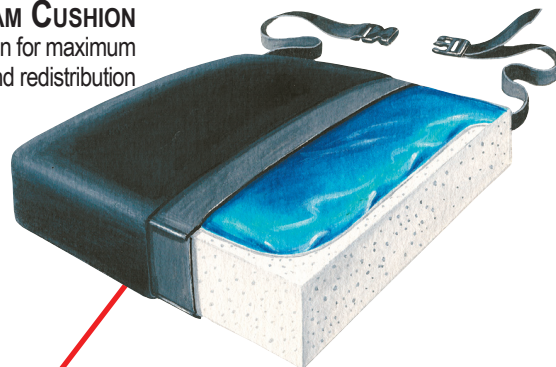


WHEELCHAIR ACCESSORIES

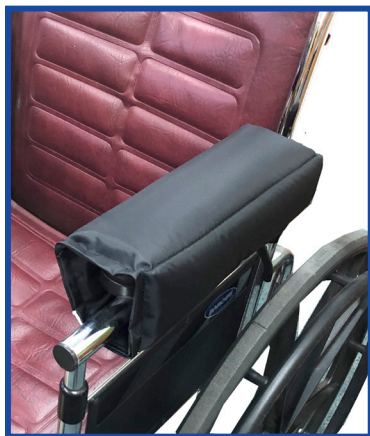
706055 - ADJUSTABLE LATERAL SUPPORT
Maximum support is provided by width-adjustable side panels



751010 - GEL-FOAM CUSHION
Two-layered design for maximum pressure relief and redistribution



NOTE: Visit our website for over 40 different types of cushions and sizes



703016 - ARMREST PAD
Comfort and pressure relief protection for arms and elbows



703073 - SKIN GUARD LEG PROTECTOR
Protects legs against skin tears and bruises



703068 - CALF PAD COVER
Reduces pressure and skin tears



703060 - LEG BOLSTER
Protects against skin tears due to sharp and/or protruding edges around footrest/legrest hanger brackets



703472 - SWING AWAY FOOT
Swings away for easy wheelchair transfers

WOUND MANAGEMENT

GERI-SLEEVE
(503350)



Note: Four (4) additional sizes and two (2) colors



New extra-heavy stockinette maintains skin integrity

SUPER SOFT HEEL PROTECTOR (503410)



BILATERAL ANTI-ROTATIONAL GRIPPER - 503430
Universal foot rotation control

Poly-filled heel protector combines off-loading of the heel and control of foot drop

HEEL-FLOAT W/GEL
(503035)



Off-loads the heel over an air cavity to eliminate pressure

HEEL-FLOAT II
(503134)



The ultimate product in comfort, heel off-loading, and cost saving

HEELS-OFF
503151



Suspends heels off the bed for total heel pressure relief

ULTRA-SOFT FIBER-FILLED HEEL CUSHION (503030)



Helps reduce the risk of pressure sores

NOTE: All products come in a variety of sizes and quantities, see website for more details.

BED POSITIONING & SAFETY

30 DEGREE BED BOLSTER SYSTEM W/ SLIDE SHEET & TWO 16" WEDGE (556150)



Offers coccyx pressure relief and a safe transferring system for the caregiver



30 DEGREE POSITIONING WEDGE (554025)



Provides optimum positioning for pressure relief



NOTE: Also available in a 45° Positioning Wedge (554010)

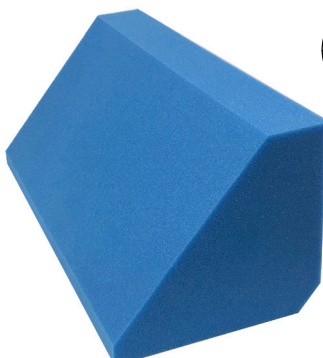
ROLL CONTROL BOLSTER (556010)



Protects against falls and positions residents



BODY ALIGNER (91182)



Economical foam body positioner

ABDUCTOR/ CONTRACTURE CUSHION (555060)



Prevents leg contracture and abduction in bed

NOTE: All products come in a variety of sizes and quantities, see website for more details.

FALL MAT SAFETY & MATTRESSES

E-Z LANDING II (911585)



The EZ Landing II fall mat is characterized by its ease of care, one piece elastomeric foam surface, beveled low profile edges

SAFE & SOUND FALL MAT (911570)



A multi-purpose impact reduction floor mat. It can be placed next to a bed or chair of at-risk patients to cushion and reduce injuries from falls.

SAFESIDE FALL MAT (911572)



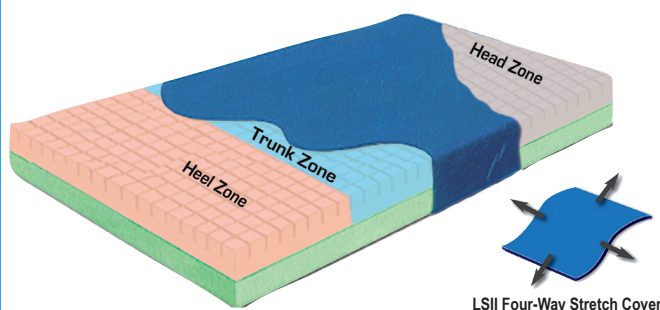
Folding



Impact absorption plus step-on stability

NOTE: Other types and sizes of fall mats are available, see our website.

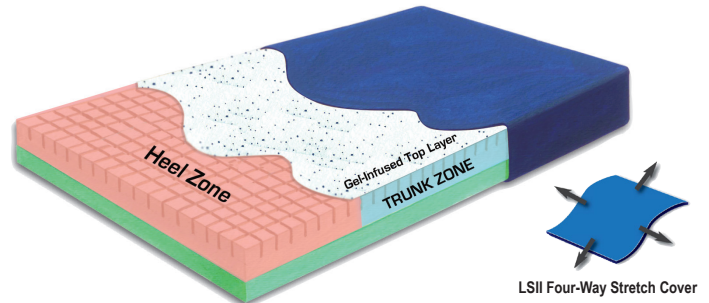
PREMIUM PRESSURE CHECK MATTRESS (558020)



LSII Four-Way Stretch Cover

The Premium Pressure-Check 2-Layer, 3-zone, 6" Mattress is specifically designed to provide an industry leading pressure redistribution and pressure relief mattress. It comes with a Seven (7) year non-prorated replacement warranty and complies with fire code 16 CFR 1633

PREMIUM PRESSURE CHECK GEL-INFUSED VISCO MATTRESS (558125)



LSII Four-Way Stretch Cover

The Gel-Infused Visco mattress has all the same attributes of the Premium Pressure Check mattress with the added benefit of a third row of gel-infused visco foam that cradles to the body and helps keep the weight off of the pressure points while the gel in the foam provides a cooler surface by allowing the body heat to escape. The mattress comes with a Seven (7) year non-prorated replacement warranty and complies with fire code 16 CFR 1633

These mattresses are available in different sizes and styles. Visit our website for more details

NOTE: Skil-Care custom manufacturers Bariatric mattresses to your specifications and offers Psychiatric mattresses with a NO ZIPPER cover.

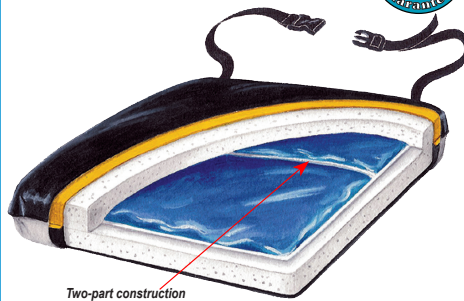
SEAT CUSHIONS & UPPER BODY SUPPORT

POSITION PLUS CUSHION
(751435)



Four separate gel-filled chambers provide stability, pressure relief and redistribution

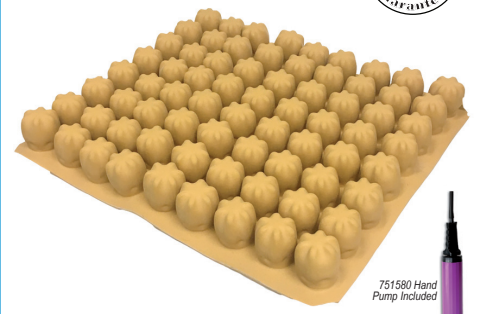
ECONO-GEL CUSHION
(751151)



Two-part construction for greater stability

Pressure relief and redistribution at a budget price

CUSHION AIR
(751560)



751580 Hand Pump Included

A proven design for pressure relief and positioning

BARI-GEL-FOAM CUSHION
(915120)



Double-chamber construction relieves pressure for heavy residents

MOBILE ARM SUPPORT
(706210)



Rotates

Rotational arm support for contracted-arm residents

LATERAL BODY SUPPORT
(706010)



Controls lateral leaning in wheelchair or geri-chair

NOTE: All products come in a variety of sizes and quantities, see website for more details.

RESIDENT SAFETY

MULTIPro ALARM UNIT
(909510)



Simply connect this alarm to any of the sensors Skil-Care offers to monitor all your fall-risk residents.

NOTE: Can be connected to nurse call system with additional call cord accessory kit 909560

BEDPro ALARM UNIT
(909335)



Protects residents against fall-related injuries resulting from unassisted bed exits.

NOTE: Can be connected to nurse call system and silenced in room so as to not wake up other residents

GEL-FOAM TOILET SEAT CUSHION (915325)



Layered with gel and foam to provide comfort and maximum pressure relief and redistribution

NOTE: Gel-Foam Toilet Seat also comes in a alarm version (#909376). Visit our website for more details

UNDERSEAT SENSOR
(909391)



Effective alarm not accessible to resident

1YR. SENSOR PAD
(909358)



Monitors egress of resident in the chair or bed
Additional warranties available: 45 & 180 days

E-Z RELEASE BELT SENSOR (909393)



This belt sensor is resident friendly and can be used with any of the Pro Series alarm units.

NOTE: Other sensor pad sizes, warranties and units are available on our website.

PATIENT CARE

**OXYGEN CYLINDER
HOLDER (707027)**



Fits all push-handle wheelchairs

**URINARY DRAINAGE
BAG (102010)**



Conceals urinary drainage bags from public view

**SHOWER PONCHO
(909140)**



Keeps resident warm before and after the shower

**VINYL BED RAIL PADS
(401010)**



15-inch-high pads provide maximum cushioning

**SUPER-SLING 4-HANDLE
(253020)**



Facilitate resident transfer, lifting, and positioning while reducing caregiver injury.

**GERI-CHAIR COZY SEAT
(703003)**



Protects against skin tears & relieves pressure

NOTE: All products come in a variety of sizes and quantities, see website for more details.

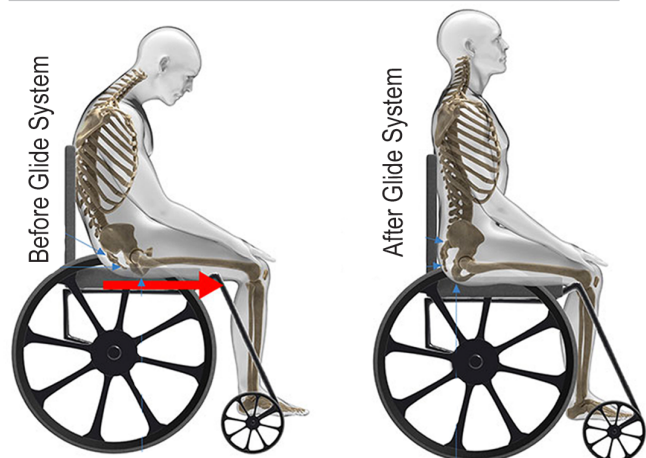
One-Way Glide System

The SkiL-Care One-Way Glide System is designed to restrict patient movement in one direction.

The unique material helps to maintain proper seating position and allows for easy repositioning of the patient. Once placed in position the locking material reduces the risk of the patient sliding forward while the low friction material reduces the force required to reposition the patient in order to achieve a proper seating position.

- Promotes proper posture and provides additional comfort.
- Reduces staff time for repositioning.
- Can be used on any seating surface.
- Can be used in automobiles.

ReOrder #	Description	Size	U/M
556080	Continuous Loop	17"W x 17"L	Ea.



COTTON GAIT BELTS

(252015, 252070, 252010 & 252074)



- Provides lifting and walking assistance
- Reduces possibility of back injury during resident ambulation
 - Available in standard and heavy-duty cotton webbing
 - Two buckle choices: Delrin or Metal

INFECTION CONTROL BELTS

(914376, 914378, 914380, 914384 & 914387)



These PathoShield Gait Belts provide lifting and walking assistance while meeting **INFECTION CONTROL F-880**

- Liquid-proof, plastic-coated webbing disinfects with spray or wipe-on disinfectant
- No stitching preventing penetration of bacteria

NOTE: All belts are 2" wide and 60" or 72" long, see website for more details